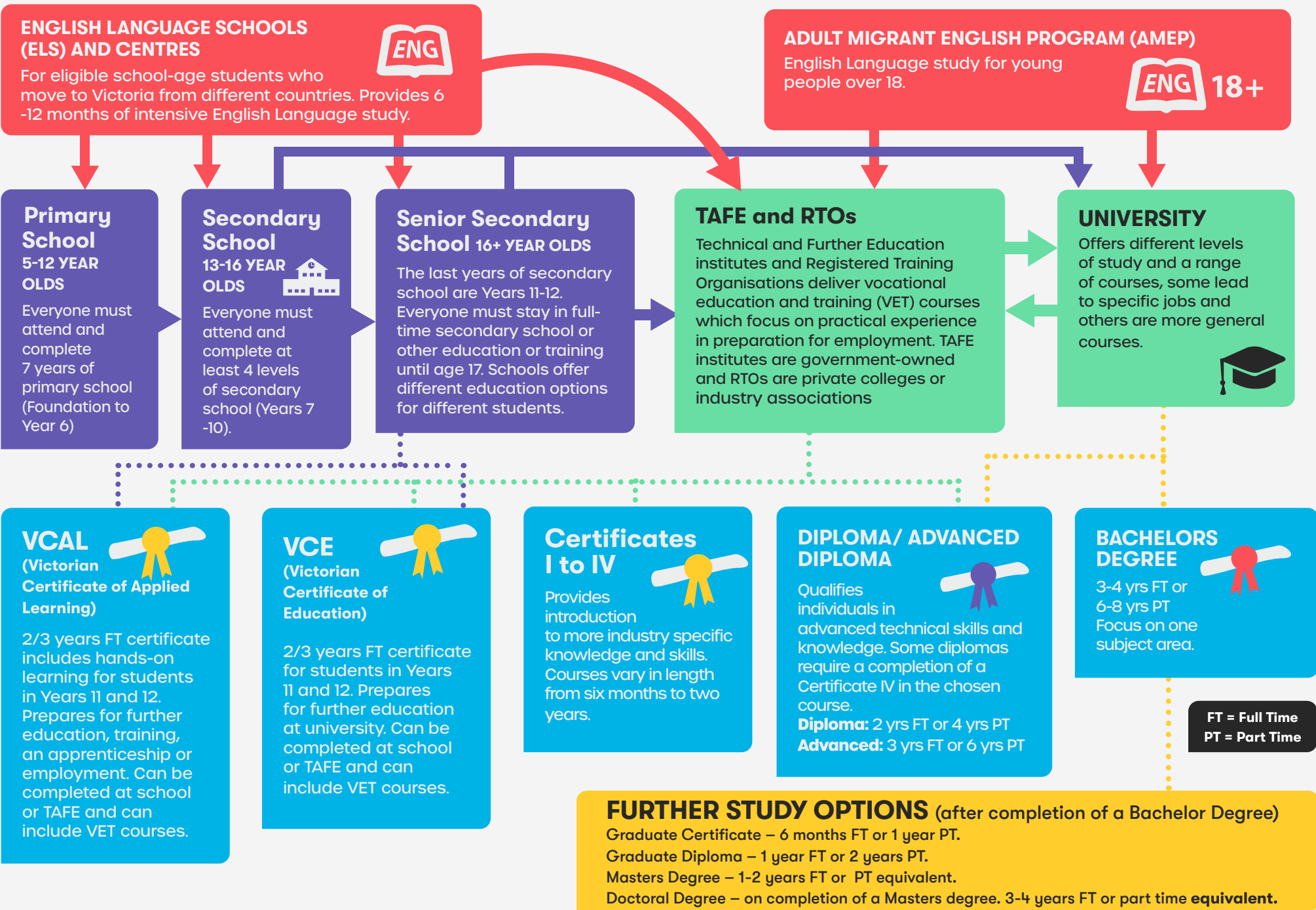


# A MAP OF THE VICTORIAN EDUCATION SYSTEM





## FINANCIAL SUPPORT

**Centrelink** - can help while studying full time with financial and other assistance. Many young people are supported by Youth Allowance. See [centrelink.gov.au](http://centrelink.gov.au)

**Scholarships** - sometimes offered by places of study to help with the cost of study, travel, books and housing.

**Higher Education Loan Program (HELP) or FEE-HELP loans** - available to Australian citizens or permanent residents to help pay for university, TAFE and RTO courses. See [studyassist.gov.au](http://studyassist.gov.au)

## MY EDUCATION

CMY's MY Education provides resources and support crucial to the success of primary and secondary students' learning. MY Education delivers two key programs that support schools and community organisations to improve out-of-school-hours learning throughout Victoria.

### Learning Beyond the Bell (LBB)

Across Victoria, LBB supports over 300 out-of-school-hours learning support programs, also known as homework clubs. These programs provide high quality tuition and learning support to children and young people from migrant and refugee backgrounds and their families. They also assist families to better support their children's learning at home.

### Refugee Education Support Program (RESP)

RESP improves the educational outcomes of students from migrant and refugee backgrounds. RESP provides holistic and targeted support to selected schools to strengthen the connections between student achievement and wellbeing and student, family, school and community engagement.

RESP is a partnership between CMY, Foundation House and the Department of Education and Training, delivered in collaboration with Catholic Education Commission of Victoria and the Association of Independent Schools Victoria.

CMY's MY Education program is generously supported by the Victorian Government.

## CENTRE FOR MULTICULTURAL YOUTH

**T:** (03) 9340 3700

**W:** [cmj.net.au](http://cmj.net.au)

**E:** [myeducation@cmj.net.au](mailto:myeducation@cmj.net.au)

## FURTHER HELP

**Career Development Association of Australia**

**W:** [cdaa.org.au](http://cdaa.org.au)

**Adult Migrant English Program (AMEP)**

**T:** 131 881 | **W:** [education.gov.au/amep](http://education.gov.au/amep)

**Victorian Skills Gateway, TAFE & Training information**

**T:** 131 823 | **W:** [skills.vic.gov.au](http://skills.vic.gov.au)

**Department of Education & Training, Information & Referral Service**

**W:** [education.vic.gov.au](http://education.vic.gov.au)

**Victorian Curriculum and Assessment Authority (VCAA)**

**T:** (03) 9032 1629 | **W:** [vcaa.vic.edu.au](http://vcaa.vic.edu.au)